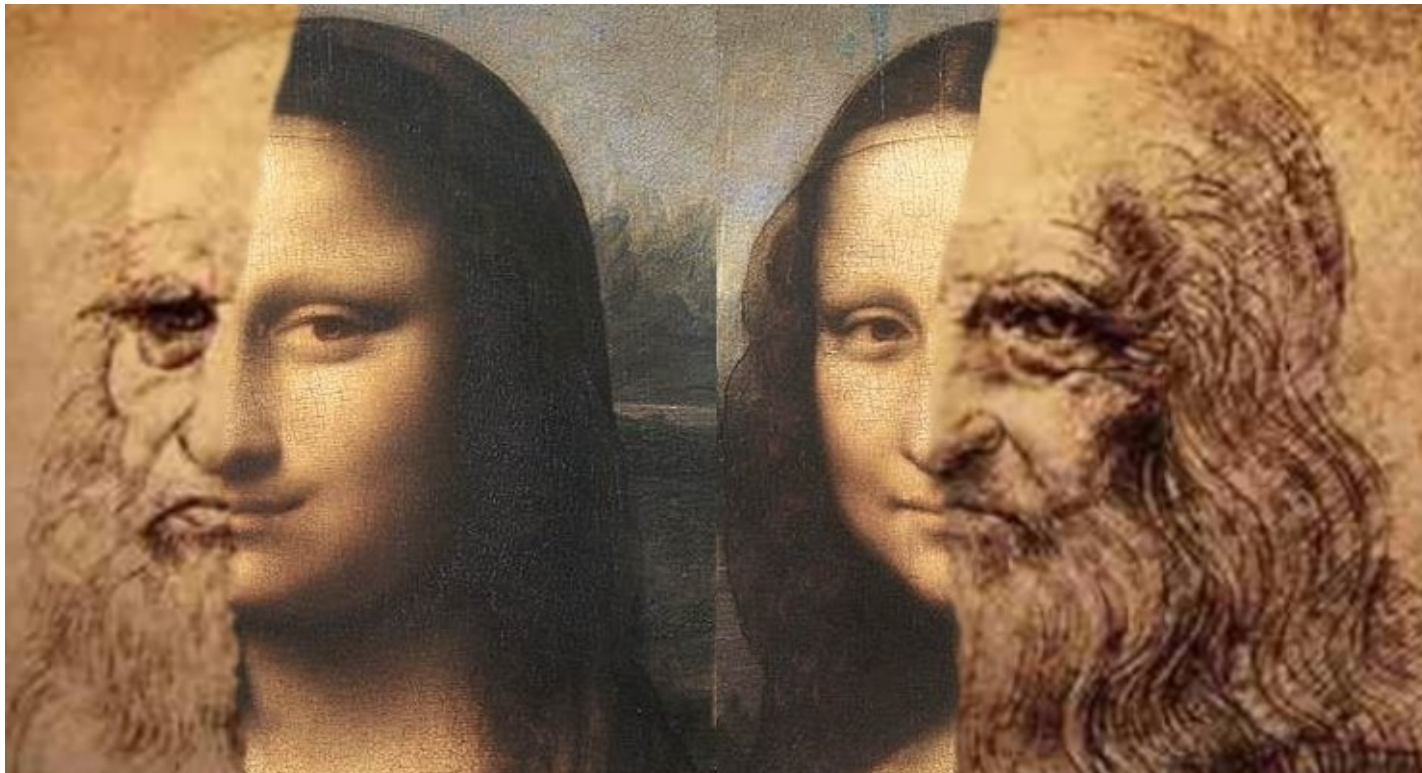


M O N A L I A S



THE FEMININE ASPECT OF LEONARDO DA VINCI

HUGO JENKS

Copyright © Hugo Jenks 2008

The right of Hugo Jenks to be identified as author of this work has been asserted by him in accordance with the Copyright, Designs and Patents Act 1988.

First published 2008 by
Brontovox Publications

www.brontovox.co.uk

All Rights Reserved. No part of this publication may be reproduced, stored in a retrieval system, or transmitted, in any form or by any means, electronic, mechanical, photocopying, recording or otherwise without the prior permission of the Copyright owner.

If you wish to make use of any diagrams, photographs or text please contact Brontovox Publications.

Permission is granted for you to copy this document as a PDF file, and to place it on your website or blog provided that it is done in its entirety, without additions, modifications or deletions. A clickable link is also required, pointing to the Brontovox Publications website.

If any graphics are used within your own publication, website, or blog, they must be captioned as follows.

© Hugo Jenks 2008 www.brontovox.co.uk

The permission granted for you to make use of this material does not in any way transfer the ownership of this material to you. The ownership remains with the Copyright owner.

M O N A L I A S

The Feminine Aspect of

Leonardo Da Vinci

Hugo Jenks

www.brontovox.co.uk

1 Introduction

The journey of discovery follows a curious route. It did not even occur to me, when setting out to examine Stonehenge and other ancient monuments, that there would be any linkage with Leonardo Da Vinci. And yet there is an ancient symbolism that, possibly, has been preserved at least in essence, over a vast time span of over five millennia. Quite remarkable!

The following is an extract from my book "The Bones of Stonehenge".

Stonehenge has been an enigma for so many centuries, and so has the smile of Mona Lisa.

Hugo Jenks 2008

www.brontovox.co.uk

2 Leonardo

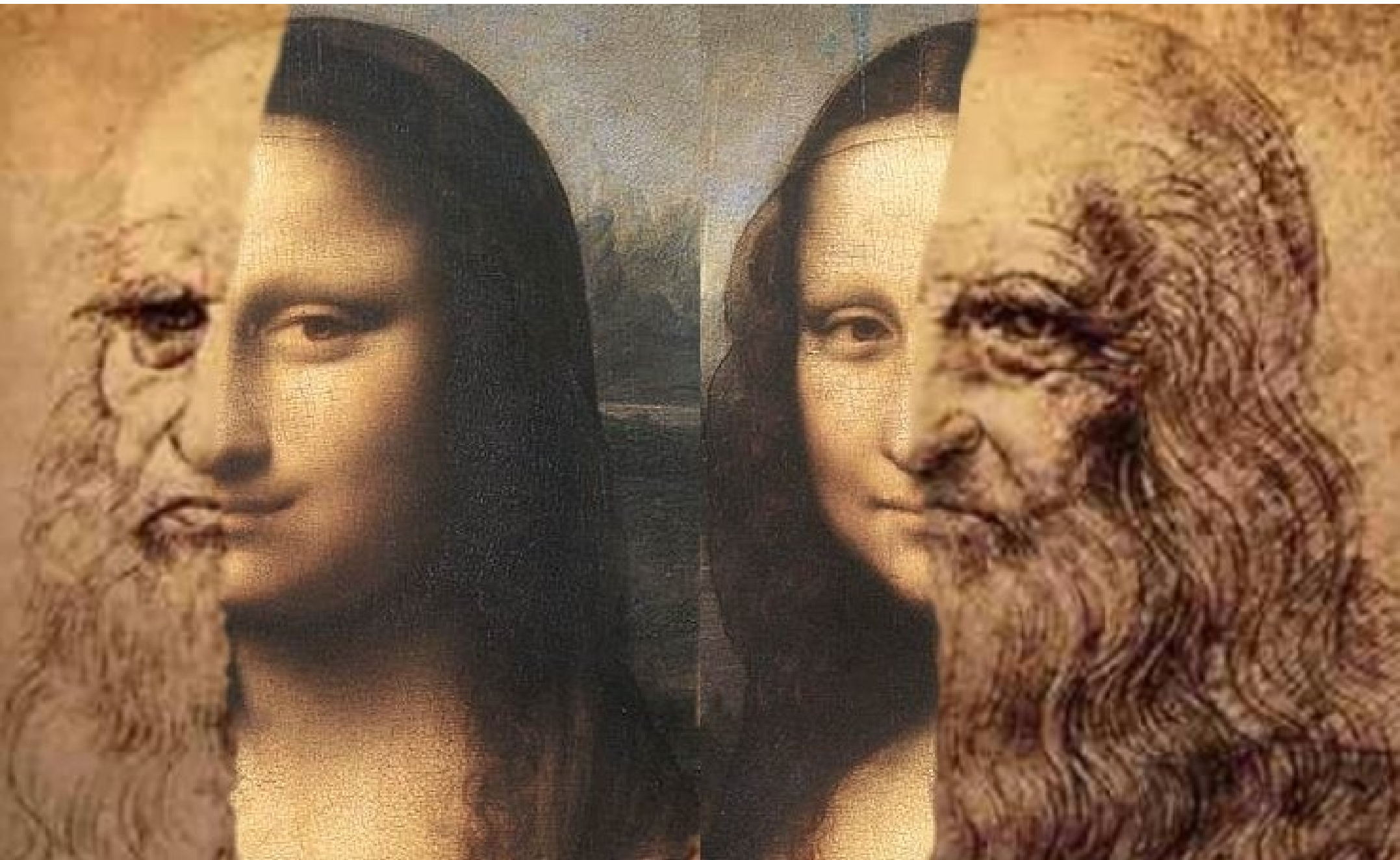
Leonardo Da Vinci, a man of genius, has left a few clues for us. The enigmatic smile of the “Mona Lisa”, hints at an underlying message. Who she is remains a mystery, however, she must surely be a close relative. A sister, or perhaps a daughter. The long nose with a hint of bulbous, the upturned creases at the corner of the eye, the expansive forehead, all hint at shared genes. Perhaps the shape of the jaw follows too, but is obscured by the artist's beard.

She may never have existed, except in the imagination or desire of the artist, or perhaps in a parallel universe. It may be that she represents the feminine element within the man, often denied or suppressed. She has his bones, but these are clothed with the flesh, the skin, and the texture of a woman. Nothing is entirely Yin, and nothing is entirely Yang. We see the male and female symbolism combined as one single entity.

She winks with her smile, while her eyes are steady and expectant. Folded hands at rest; they have done their task. What task? The moment captured here is also the critical turning point for mankind. Eve has handed the fruit of the tree of knowledge of good and evil to Adam, and is waiting expectantly for him to take the first bite. What man can possibly resist this temptrix?

We know her by the name “Mona Lisa”, but she has perhaps another name: “Mon Alias”. Every man has within himself his own personal, hidden, enigmatic Mona Lisa. She is simultaneously an inspiration, and an equal partner in crime.

As an additional play on words, “Mona” is an anagram of “Amon”, the Egyptian god of the sun. “Lisa” is L'isa, the goddess of the moon. So the hidden meaning of the name is the unification of the sun and moon, representing male and female. It represents harmony and beauty. We can see the mystical androgyny shown within the statues and carvings of Pharaohs, who were sometimes shown with the feminine characteristics of wide hips, and also breasts. It would not be surprising if Da Vinci had known this, even though the hieroglyphs had yet to be deciphered.



To produce the picture shown here, firstly a mirror image of the Da Vinci self-portrait was made using a photo editing application. Then using "The Gimp" application, the images were scaled appropriately, and overlaid on separate drawing "layers". The upper layer was then selectively deleted, revealing the lower layer.

If the Mona Lisa is indeed a self-portrait, then it is therefore a mirror image of the artist. How would Da Vinci have created his real self-portrait the correct way round? We know that he was proficient at writing in mirror image, so he may simply have reversed left and right in his mind's eye, whilst looking at himself in a mirror. However, it is possible to see yourself the "correct" way round, using two mirrors set at right angles to each other. The image is reversed by the first mirror, and reversed again by the second. This may not, however, be an adequate explanation for the exact duplication of the angle of tilt and orientation of the head. Even a small variation of these angles would spoil the effect. It may be that the Mona Lisa was painted, by viewing the self-portrait sketch in a mirror. Conversely, the sketch could have been drawn by viewing the Mona Lisa in a mirror. A camera obscura would also reverse the image. This is an area for further investigation by an art historian. It may explain why Da Vinci kept the Mona Lisa with him for some years.

It has been suggested that Leonardo Da Vinci was homosexual, although there is no real evidence. It may simply be that he was preoccupied with his work and interests, and was not able to devote the energy to the demands of family life. But even if he had been, why should it be such a concern? It is very often the case that homosexuals are talented and creative, and make vitally important contributions to the well-being and progress of society. Take the case of Alan Turing, by way of example. He was a mathematical genius, and played a key role in the decryption of the Nazi secret messages during World War 2. It was vitally important work, without which the course of the war would have been so different. But rather than receiving the honours that he so richly deserved, he was hounded due to his sexuality, to the point that he felt his only option was suicide. That this quiet and private man was treated in that way is shameful. Thankfully we now live in a more considerate age. But such considerateness should be permitted to develop naturally, and not be forced artificially by legislation. We should strive to treat our fellow humans with loving kindness, irrespective of our differing backgrounds and perspectives. The unfortunate effect of legislation is that it curtails freedom of expression, and is therefore highly detrimental to progress towards a genuine understanding of each

perspective. Such curtailment of freedoms is to the detriment of everybody, and represents a significant step towards a repressive state.

The very ancient carvings on the megaliths have remained hidden for millennia. Their enigmatic message has been there all the time, but we have lacked the vision to see it. When the image is recognised, it has the ring of truth, but with some details obscured, as through a mirror darkly.

For now we see through a [looking-] glass, darkly; but then face to face. now I know in part; but then shall I know even as also I am known. 1 Corinthians 13.12

The following is highly speculative. It draws upon an idea given in “The Da Vinci Code” by Dan Brown.

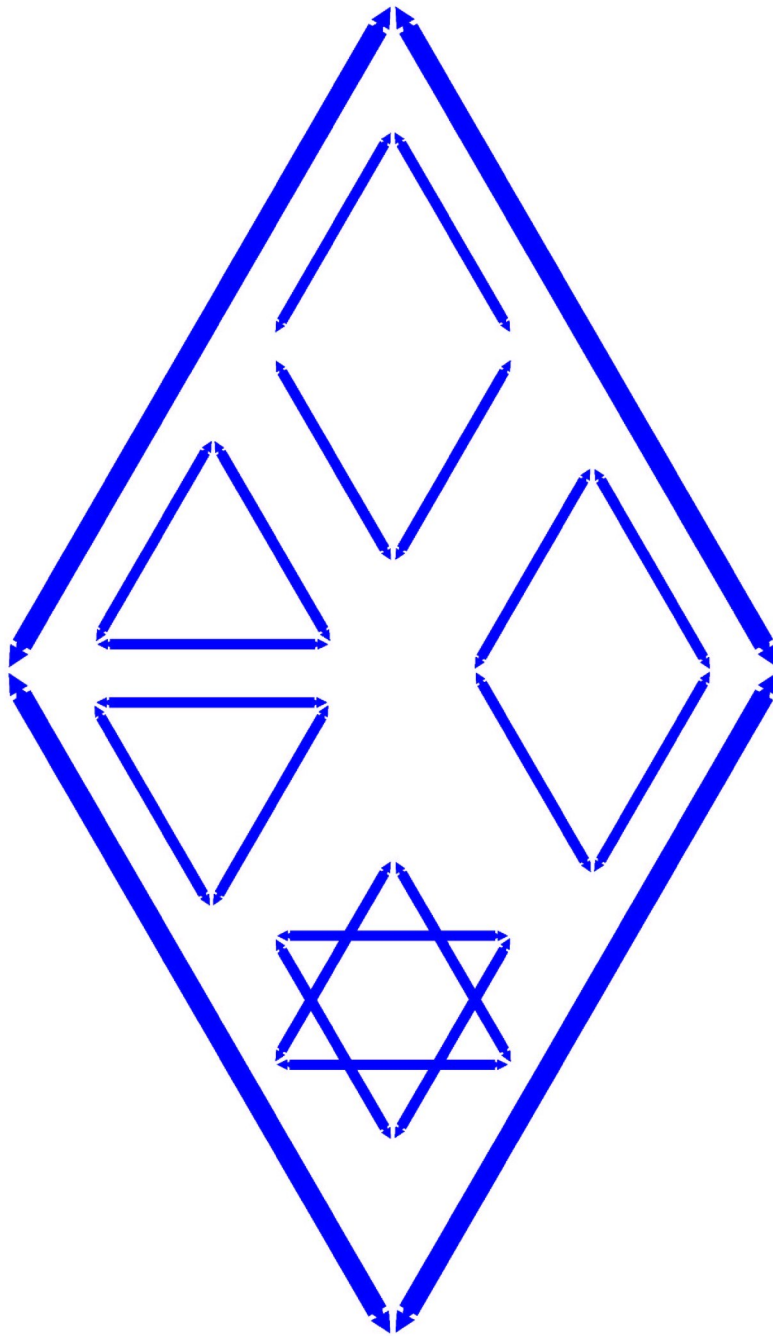
In that novel, the symbolism of the male essence (or blade) is given as an equilateral triangle, with the point uppermost, like an Egyptian pyramid. The female symbol (or chalice) is given as an equilateral triangle, but with the point downwards. The association with the male and female characteristics is derived from an upwards-pointing chevron, and a downwards-pointing chevron, respectively. In other words, the two triangles, but without the horizontal lines.

Combining the two triangles by overlapping them produces the Star of David symbol, which incorporates equally the male and female entities as one.

However, perhaps a much older combination is made, by taking the chevrons, and not the triangles. Together, these chevrons form a diamond shape. This is the diamond shape depicted so very often, and associated with the power and word of God. So now, as well as that meaning, and the meaning of all four compass points, and all four elements, we also add the meaning of the duality of male and female. It is a powerful symbol indeed.

The Star of David symbol also has significance for Hinduism, Buddhism, and Jainism. It is considered to consist of two triangles, one pointing upwards and the other downwards. In Sanskrit, the two parts are called “Om” and “Hrim”. The downwards triangle represents Shakti, and the upwards triangle Shiva. The union of these represents Creation.

In Alchemy, the two triangles represent fire and water. The connection was made earlier, of Stonehenge in the south,



representing death, and associated with the fire of cremation, and its opposite of Silbury Hill in the north, surrounded by water, and associated with birth. The baby in the womb being protected by an encirclement of water.

By a happy coincidence the name DAVID itself embodies these shapes. The two “D”s, with one of them reversed, together form a circle. The “A” represents an upward pointing triangle, the male, and the “V” a downward chevron, the female. This meaning is further reinforced, because the “I” also represents the male, and the circle represents the female. Do you believe in coincidences, or do you feel that there is some sort of plan that is working itself out behind the veil of our limits of perception?

It may be that the diamond shape will be found to have a very ancient history, stretching back in time, perhaps even pre-dating the Neolithic period, and to be found over a wide geographical area.



3 Further Reading

The description of Leonardo Da Vinci is an extract from “The Bones of Stonehenge”. In that book, a number of ancient monuments have been examined, and new findings and interpretations have been made.

- ◆ Stonehenge was a remarkable scientific instrument, used for observing the sky.
- ◆ Carvings particularly on bluestones in the Preseli Mountains of Wales depicting their religious beliefs.
- ◆ An understanding of Silbury Hill, and the significance of the sunrise over it at the time of autumn equinox.
- ◆ Carvings of scenes cut into the surface of the ground, particularly significant at Stanton Drew.
- ◆ Various new interpretations of archaeological data.
- ◆ Surveyed Woodhenge and discovered its significance.
- ◆ Found linkages with megaliths in Japan.

“The Bones of Stonehenge” can be obtained via: www.brontovox.co.uk